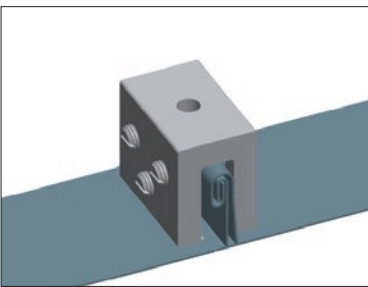
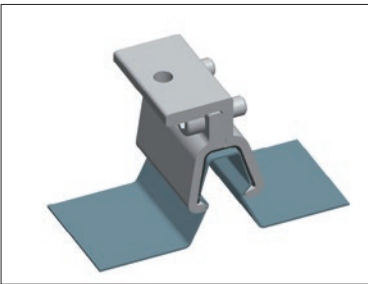


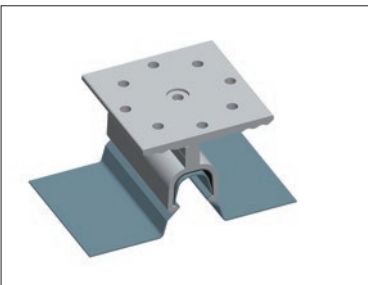
Kliplok ®700 with rail



Locked Seam®



Kliplok ®406



Kliplok ® 700 without rail



Kalzip®

Features

|                               |   |
|-------------------------------|---|
| Roof type                     | Suitable for Lysaght ® Kliplok ®406, 700, Lysaght® Locked Seam®, Stramit® Speed Deck, Fielders® Kingkilp, Kalzip® etc, customizable |
| Min. sheet thickness          | 0.42mm minimum  |
| Roof slope                    | Up to 45°   |
| Building                      | Height up to 20m  |
| Wind speed                    | Up to 88m/s (316.8kmh/196.9mph)   |
| Standard                      | AS/NZ1170.2:2011, JIS C 8955:2011, other international standards  |
| Distance between rail fixings | Depending on load condition, refer to manual  |
| PV module                     | Framed, unframed  |
| Module orientation            | Landscape, portrait   |
| Size of module array          | Any layout up to site condition   |
| Material                      | Anodized aluminum 6005 T5, stainless steel 304, 410   |
| Color                         | Natural, powder coated  |
| Module widths                 | Maximum 1.0m  |
| Module lengths                | Maximum 2.0m  |
| Warranty                      | 10 years limited warranty, refer to warranty doc  |

- Roof structure to be checked as suitable before installation.  
Clamps are to be fixed within 100mm of sheet fixing clips to purlins.

Non penetrating standing seam  
roof mounting system

Headache-free mounting solution for metal  
roofs with standing seam design

The Antaisolar standing seam roof clamps make mounting on folded seam roof particularly easy. The clamps are simply attached to the standing seams. The clamps offer a secure fastening without penetrating the roof sheets, ensuring maximum stability with minimum weight. The variety of system combinations like L-foot, fixed foot or PV module clamp directly, allows it to be connected quickly to all rail components.



Standing seam



Framed module



Unframed module



Orientation landscape



Orientation portrait